

Winter 2009

1648 S. Eastwood Dr.
Woodstock, IL 60098
(815) 338-0099 ext. 3
www.mchenryswcd.org



Inside this issue:

District Activities	2
Annual Report	2
Educational Opportunities	3
Annual Meeting	4
Tree Sale Brochure	5
Fish Sale Brochure	10

Reminders:

- District Tree Sale: Orders Due March 31, 2009
- Tree pick-up: April 23-24, 2009
- District Fish Sale: Orders Due April 15 and/or April 26, 2009
- Fish pick-up: May 2, 2009
- SWCD Office Closed January 19, 2009,
- Northeastern Illinois Envirothon April 7-8, 2009
- Board Meetings 6:30 pm, 1st Tuesday of the month.

The Importance of Soil & Water Conservation

Soil and Water Conservation Districts across the State have experienced reduced state funding. This is partially due to all that we do “behind the scenes,” outside of the public eye. With that in mind we would like to reach out to those who have not heard of us and give you a little background on the importance of Districts.

First, Soil and Water Conservation Districts are legally formed under the Illinois Soil and Water Conservation District Act (Chapter 70, Par 405/1 et.seq.) It is one of the few agencies required to perform certain statutory requirements but not provided the authority to levy taxes. Rather SWCD’s rely on grants, fees, sales, and donations as a means of funding. Illinois legislature has provided funding through general revenues but now that funding has been cut by 50%.

We have many programs that we administer through our office. For the most

part our programs are a mix of both agriculture and urban.

We are responsible for administering the Land Evaluation and Site Assessment (LESA) program. LESA is required for all zoning within county jurisdiction. LESA determines if the parcel meets the intent of land use plan and the minimum requirements of the zoning ordinance. This is done as part of the Natural Resource Information report which is a requirement of state statutes. From 1973 to present we have written over 4000 reports totaling nearly 80,000 acres of land.

We provide technical assistance (utilizing Geographic Information Systems) to thousands of county residents with information such as soils maps, wetland and floodplain maps, geologic information, and historical aerial photography from 1939, 1954, 1967, 1980, 1988, 1991, 1994, 1999, to present.

Staff provide assistance

to watershed planning groups such as the Nippersink, Kishwaukee, Coon and Boone Creek planning committees.

Education programs are provided to area schools through Ag days, mentoring program, erosion demonstrations, soil judging contest, and our traveling education trailer (The Greatest Show “Of” Earth).



Soil erosion & sediment control plan reviews and site inspections are conducted through inter-agency cooperative agreements with the Illinois EPA, the US Army Corps of Engineers and the McHenry County Stormwater Management Commission.

Continued on page 3

TREE SALE AND FISH SALE BROCHURES INSIDE!!!



Staff has been busy throughout the year providing technical support to county residents and promoting the wise use of natural resources.

Breakdown of Fiscal Year 2008 Activities

Conservation Information/ Outreach	# of Activities	# of Participants
Conservation Tours for Adults	1	30
Watershed Meetings	24	360
Annual Meetings		50
Soil Stewardship Meetings/Programs	1	92
Meetings with Special Interest Groups	56	1168
Displays at Fairs, Banks, etc.	2	300
Field Demonstration Plots	1	
Classroom Presentations K-8	57	1830
9-12	2	120
College	3	120
Educator Workshops	4	190
Arbor Day Programs	40	6000
Earth Day Programs	2	600
Poster Contest	1	30
FFA Soils Judging Contest	1	80
Other Education	1	50
Envirothon	5	30
Provide School Projects	5	
Natural Resource Inventory Reports	83	1016 acres
Land Evaluation Site Assessments	27	565 acres
Soil Erosion Sediment Control Plan Reviews	30	70 acres
Soil Erosion Sediment Control Inspections	520	
Soil Borings/Mapping	126	84 acres
Facility Planning Area Reviews	4	
Flood Related Reviews	150	
Mining Activities	2	
Pipeline/Utilities Activities	11	
SECS Tours/Workshops	5	50
Land Use Meetings/Hearings	29	244
Farmland Protection Events	12	60
Newsletters	2	3480
Teacher Newsletters	2	176
Newspaper Articles	1	2
Websites		12142 hits
Conservation Speaking Engagements	3	175
Tree Sales	1	97
Fish Sales	1	17
Aerial & GIS Maps / Plat Books	1919	299

Reminder...

Our office can create site specific natural resource maps of your property. Come in and see what we have to offer!

2007-2008 Annual Report: Year Ended June 30, 2008

Revenue

Annual Meeting	\$ 720
Erosion Sed. Control	40,195
Grants	
State	80,066
County	30,000
Interest	13,388
NRI Income	27,485
Office Sales	10,145
Grant Administration	2,591
Soil Borings	45,427
Tree Sale	11,290
Fish Sale	2,923
Total Revenue	264,230

Expenses

Management	\$227,739
Annual Meeting	1,914
Credit Card	813
Board Meeting	649
NRI Expense	33
Office	16,111
Soil Borings	362
Tree Sale	6,074
Fish Sale	2,097
Education	1,563
Insurance	35,275
Meetings	280

Expenses Cont.

Training	1,226
Vehicle	11,082
Storage Building	1,619
E & S Expense	765
Miscellaneous	1.99
Total Expense	\$307,801

Wetland Slides Available

Are you conducting a wetland investigation? Our office can provide you with Farm Service Agency Compliance Slides. Contact Phyllis McKinley for more information at (815) 338-0099 ext. 3.

Importance... (Cont. from pg 1)

We provide soil borings for septic suitability. This is a McHenry County Health Department requirement that insures public health when planning, designing and installing onsite waste disposal systems. In 1988 the County Health Department adopted new regulations to determine soil suitability for septic systems. The SWCD was very proactive in helping with this change and was the first in the county to hire soil scientists to conduct these evaluations. The SWCD has performed nearly 7000 soil borings since 1988.

Since 1965 the SWCD has provided residents with a source of inexpensive seedling trees and shrubs. Since the inception of the tree sale and tree planting program it is estimated that the SWCD has sold and planted over 1 million trees in McHenry County.

Farmland protection: We have assisted landowners with the formation of Ag Areas (another statutory program that allows for a certain degree of agricultural land protection. McHenry County is number 1 in the state for total numbers of Ag areas and has Illinois' second largest Ag Area.

Fish sales: Since its inception in 2003 the SWCD has helped stock over 100 ponds in the county.

SWCD assisted the County with the adoption of the Stormwater Management ordinance. The stormwater ordinance is a countywide requirement and provides minimum standards that all units of government must adopt.

The SWCD also assists with administering grants from federal or state sources.

We have also reinvested our resources into the county with the 1999 purchase of an 8 acre site

We are going electronic!

In an effort to save money and reduce paper use, our newsletter will now be available on our website: www.mchenryswcd.org. If you are unable to access our website, please call our office and we will make sure you receive a copy in the mail.

on Dean Street in Woodstock. The site is located at the southeast corner of U.S. Rt. 14 and Dean Street. The unique natural resources found on this site provide opportunities to teach area schools about soil science, wetland restoration, tree planting, prairie restoration and natural landscaping. We have already hosted several educational events such as soil judging contests and Envirothon training. We also designed and implemented alternative stormwater management practices into the site. The Dean Street facility

is an asset to the County and will be for many years to come. It has the potential of evolving with the development of new technologies.

We saved the best part for last. Did you know that the SWCD's are not a taxing district?

District Directors:

Critchell Judd, Chairman
Annette Rafferty, Vice Chairperson
Kenneth Fiske, Secretary
Orrin Bangert, Treasurer
Gregory Ibeling, Director

Staff:

Ed Weskema, District Manager
Bob Oja, Soil Scientist
Spring Duffey, Resource Analyst
Phyllis McKinley, Administrative Coordinator
Tom Mattingly, Urban Erosion Control Specialist

USDA-NRCS Staff:

Dave Brandt, District Conservationist
Les Weskema, Conservation Technician

Educational / Grant Opportunities

Below is a quick list of educational opportunities available to McHenry County Schools and Youth Groups.

Envirothon: Environmental High School Competition.

Greatest Show "of" Earth hands-on education trailer: This trailer brings the wonders of soils and its properties to your school. Geared to 3rd-5th grades.

Watershed Programs: Through the use of a table top model, watersheds are explained and non-point source pollution potentials are evaluated.

Erosion Demonstration: Students see first hand the destructive force of water and the pollution/social problems it can cause.

Third Grade School Tree: Each third grade school is offered a native tree to plant on their school grounds for Arbor Day.

Conservation Grants: The District provides up to \$2000.00 each year in grant money to schools for innovative environmental projects (school prairies, water monitoring equipment, etc.).

Other Programs: Staff are knowledgeable in a variety of areas and can tailor programs to fit your subject, by request.

For more information on any of the aforementioned programs, contact Spring Duffey at (815) 338-0099 ext. 3 or at Spring.duffey@il.nacdnet.net.

Individuals Honored at our 2008 SWCD Annual Meeting

Linda Balek, Volunteer of the Year



Linda Balek was recognized for her tireless efforts as a community volunteer.

About 8 years ago Linda decided to do something more exciting and meaningful with her life, she went back to school, got a degree in Environmental Studies and moved from Chicago to McHenry County.

Her first volunteer experience was at the Alden Sedge Meadow site. In 2002 she did an internship with MCCD. She felt like she needed more experience so she did some volunteer work with NRCS and the Soil & Water Conservation District. She was able to follow Dave Brandt and Les Weskerna around to learn about agricultural conservation practices. In 2003 she took a job at IDNR in Springfield, and then saw a position available with The Land Conservancy of McHenry County. She landed the job of her dreams and moved back to Alden where she was introduced to some of the locals like George Johnson, Orrin Bangert, John and Timmy Clemmetsen and Rich and Renee Dankert. She helped them with their controlled prairie burns on hundreds of acres of land. She organized several walking tours of the unique natural resources of the area.

Each year Linda also organizes the “seed saver exchange program” where volunteers collect and trade seed from native prairie plants.

Linda does not think of this as volunteer work. She says she is the one who benefits the most because she learns so much. Linda says she likes to volunteer because she always learns something and gets a sense of accomplishment when she does it.

Barbara Wheeler, Community Conservationist of the Year



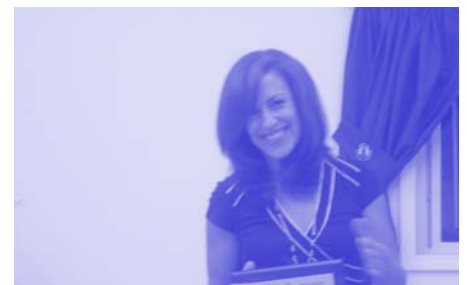
We are so proud to be one of the first, if not the first county, to have a conservation design ordinance. The purpose of the CD ordinance is to permanently protect natural resources while allowing development to occur. (The mission of the SWCD, by the way, is to advocate the wise use of our natural resources.) Barb's efforts have significantly helped us achieve this goal.

There have been two Conservation Design conferences held in McHenry County with one developed and presented by our SWCD and NRCS staff. Barb Wheeler attended both of those meetings. Barb has

been the driving force behind the appointment of the Task Force that after many meetings drafted and presented the conservation design ordinance to the county board.

We would be remiss if we did not acknowledge the hard work of Dennis Dreher and the other members of the task force. Dreher's efforts were exemplar in researching the existing conservation design ordinances and drafting the original ordinance. Barb with Dennis's help implemented a herculean outreach effort, tirelessly presenting to dozens of diverse groups: homebuilders association, realtors, McHenry County Council of Governments and many conservation groups. It has been somewhat a rough ride since, requiring significant effort of Barb and others, but we are confident it can only get better. This good thing could not have happened without Barb's leadership.

Aimee Greenspan, Conservation Teacher of the Year



Aimee is a science teacher at Crystal Lake South High School. Her goal for environmental science is to teach her students about awareness. Most students enter her classroom thinking that environmental science revolves around recycling and global warming. To her surprise, most do not even know the definition of sustainability.

Cont. pg 12

(815) 338-0099

Winter 2009



McHENRY COUNTY SOIL & WATER CONSERVATION DISTRICT

2009 TREE SALE

In our selection of species we have made every attempt to carry native plants and have carefully considered the benefits of naturalized plant material. When selecting species for the sale, we put great emphasis on species' adaptability to environmental conditions (climate, soils, etc.) present in McHenry County. Consideration is given to plant material for wildlife benefits, erosion control attributes, windbreak quality, Christmas tree value, and availability.

BEFORE YOU MAKE YOUR SELECTIONS

All of the trees offered in this brochure are suitable for use in plantings throughout McHenry County. There are, however, some rules that must be followed to insure the survival of your planting stock. Please consider these items before you place your order:

- ❖ Read the plant descriptions to determine if the plant material is suited to your site's conditions. Extremely wet or dry conditions may limit your options.
- ❖ Consider maintenance of your grounds. Without proper care, weeds may choke out your new planting stock.
- ❖ Determine the location of your new trees or shrubs. Most of the trees require at least a half-day of full sunlight, whereas shrubs may tolerate shade better.
- ❖ Because most of the plant material is bare root, it will be necessary to plant your trees and shrubs soon after pick-up (generally within 3 to 4 days).

WHAT IS THE DIFFERENCE BETWEEN SEEDLINGS AND TRANSPLANTS?

The figures 2-0, 3-0, 2-1, 2-2, 3-1, and plug + 1 refer to the age of the seedling or transplant. The first figure indicates the number of years grown in the seedbed. The second figure indicates the number of years in the transplant bed. The total of the two numbers is the age of the plant. Thus a 3-0 is a three-year-old seedling, while a 2-2 is a four-year-old transplant. A plug is not grown in a seedling bed. It is grown in a test tube like container and then transplanted into a transplant bed. Because of the wider spacing in the transplant bed, transplants have a heavier stem, a more developed root system and multiple branching.

HOW TO ORDER

Simply make your selection from our brochure, fill in the order form and return it along with a check made payable to McHenry County SWCD or your credit card number (we accept MasterCard and Visa). Orders may be placed until March 31, 2009. Plant materials will be available for pick up on Thursday, April 23rd and Friday, April 24th, 2009



at our auxiliary building, located at 2222 Dean St, Woodstock, IL. Customers will be notified by letter to verify the exact time and location of order pick up.

EVERGREENS

Due to weather related growing conditions, the size of plant material may vary.

WHITE PINE (*Pinus strobus*) Produces long soft needles in bundles of five. Widely used in re-forestation and as an ornamental, this tree is fast growing and long-lived. It grows best in well-drained soils, but can survive in a wide range of soil conditions. One of our most beautiful native pines and an excellent Christmas tree. Reaches 80 feet.

DOUGLAS FIR (*Pseudotsuga menziesii*) A beautiful, tall growing, conical form tree, with spreading horizontal branches, quite flexible. Needles are 1 inch long, of a soft bluish-green color. A rapid growing tree, prefers moist, acidic soil and wind protection. Reaches 40-60 feet.

COLORADO SPRUCE (*Picea pungens*) Medium sized to large tree of conical habit with stout young shoots which are bluish-green to blue. Slow to medium growth rate. Prefers rich, moist, acidic soil and full sun. Reaches 60 feet.

RED PINE (*Pinus resinosa*) A common large tree with small cones and broad, irregular rounded crown. Needles are 2 in a bundle and range in length from 4 ½" to 6 ½". Grows best in sandy soils with pH between 4.5 to 6.0. Red pine is a fast growing tree, once established it has the potential of growing up to two feet per year under optimum conditions. Reaches 90 feet.

CANAAN FIR (*Abies intermedii*) Similar to Fraser and Balsam Fir but withstands wet and dry areas better. Late bud break makes the Canaan Fir less susceptible to late frost damage. Makes an excellent Christmas Tree with a good rate of growth and color. Reaches 40-55 feet.

CONCOLOR FIR (*Abies concolor*) A good Christmas and ornamental tree. Soft silver-blue needles with exceptional needle retention and a citrus aroma. Withstands heat and dryness better than any other fir and grows best in well-drained soils. Reaches 30-50 feet.

WHITE SPRUCE (*Picea glauca*) Tree with rows of horizontal branches forming a conical crown. Needles are ½" to ¾" long spreading from the upper part of the twig from very short leafstalks. Needles are blue-green with whitish lines and exude a skunk-like odor when crushed. One of the most widely distributed trees in North America. Tolerates many soil types from wet to dry. Reaches 45-75 feet.

BLACK HILL SPRUCE (*Picea glauca var. densata*) A slow growing conical tree of dense compact habit with blue-green foliage. Very hardy when established. Reaches 30-60 feet.

NORTHERN WHITE CEDAR (*Thuja occidentalis*) A resinous and aromatic evergreen tree that is adapted to swamps and to neutral or alkaline soils on limestone uplands. Reaches 40-50 feet.

FRASIER FIR (*Abies fraseri*) A very hardy, aromatic tree commonly planted for Christmas tree production, but is a slow-grower. Requires well-drained soil. Reaches 50-75 feet.

NORWAY SPRUCE (*Picea abies*) A rapid growing spruce with drooping, pendulous branches on older trees. Bright-green foliage when young, changing to glossy dark-green. Best spruce for screens and wind breaks. Does well in a variety of conditions, but needs moisture. Reaches 40-60 feet.

CANADIAN HEMLOCK (*Tsuga canadensis*) Evergreen needles are short, flat and dark green with narrow, white stripes on the underside. Its small cones are only about 1/2 inch long. Partial shade to full sun. Wet or moist soil. Reaches 40-70 feet.

SHADE TREES

SWAMP WHITE OAK (*Quercus Bicolor*) (N) (W) Will grow very well in wet or dry soils. Attractive bark, large glossy foliage turns purple-red in fall. Excellent for wildlife. Reaches 60' x 50'.

SHINGLE OAK (*Quercus imbricaria*) (N) (W) Lustrous laurel-like foliage often remains on tree all winter. Fairly fast growing. Acorns are very small and somewhat inconspicuous. Reaches 60' x 50'.

BUR OAK (*Quercus macrocarpa*) (N) (W) At maturity a very stately tree with deeply furrowed bark and large lobed leaves. Acorns are favored by wildlife. Reaches 60' x 60'.

WHITE OAK (*Quercus alba*) (N) Outstanding red to reddish-purple fall color. Slow growing but long lived. Reaches 60'+ x 60'.

SHELLBARK HICKORY (*Carya laciniosa*) (N) (W) Largest of the true hickories, shellbark may eventually grow 80' x 100'. Nut is fairly large at 2-2 1/2" diameter. Bark is similar to Shagbark but nuts and leaves are larger. Twigs are orange-brown and usually hairy.

NATIVE SHRUBS

AMERICAN Highbush Cranberry (*Viburnum trilobum*) (N) Handsome shrub with maple-like leaves, white flowers in May and bright, scarlet red berries that last well into winter. Reaches 10' x 10'.

RED OSIER DOGWOOD (*Cornus sericea*) (N) (W) A suckering shrub with vigorous shoots, dark red branches in winter. Clusters of white flowers followed by white berries. Will tolerate heavy soils. Reaches 8-10 feet.

SHADBLow SERVICEBERRY (*Amelanchier canadensis*) (N) Outstanding small tree or large shrub that is covered in white flowers in spring, followed by reddish-blue berries in June (that song birds love) and spectacular orange-red and yellow fall color. Height 12' to 14' and spread 6' to 8'.

PAGODA DOGWOOD (*Cornus alternifolia*) (N) Graceful small tree with pale yellow flowers in May followed by attractive blue/black fruit. Beautiful maroon red fall color. Horizontal branching habit. Reaches 20' x 20'.

ARROWWOOD (*Viburnum dentatum variant*) (N) Pink flower buds open pure white and fragrant. Black berries are relished by songbirds. Dark green foliage turns reddish-wine in fall. Reaches 10' x 10'.

NANNYBERRY (*Viburnum lentago*) (N) A small tree or large shrub, can grow 20' x 10'. Large glossy leaves turn purplish-red in fall. Grows in full sun, part shade and almost any type of soil.

BUTTONBUSH (*Cephalanthus occidentalis*) (N) (W) One of the best native shrubs for very wet areas. White flowers in mid summer with glossy green foliage that turns shades of red, orange and yellow in fall. Reaches approximately 6' x 6'.

(N) = Native (W) = Suitable for wetlands

2009 TREE SALE PRICE LIST

ITEM #	EVERGREEN SEEDLINGS	AGE	SIZE	PRICE/25	PRICE/100
101	White Pine	3-0	8-14"	\$19.00	\$65.00
102	Douglas Fir	2-0/3-0	9-15"	\$15.00	\$50.00
103	Colorado Spruce	2-0/3-0	9-15"	\$15.00	\$50.00
104	Red Pine	3-0	6-14"	\$19.00	\$65.00
107	White Spruce	2-0/3-0	9-15"	\$15.00	\$50.00

ITEM #	EVERGREEN TRANSPLANTS	AGE	SIZE	PRICE/10
201	White Pine	2-1	8-14"	\$19.00
203	Colorado Spruce	2-1/2-2	10-16"	\$17.00
205	Canaan Fir	Plug+1	8-14"	\$30.00
206	Concolor Fir	2-1/Plug+1	8-14"	\$31.00
207	White Spruce	2-1	10-16"	\$26.00
208	Black Hill Spruce	2-1	8-14"	\$26.00
209	Northern White Cedar	2-1/Plug+1	8-14"	\$29.00
210	Frasier Fir	3-1/Plug+1	8-14"	\$30.00

ITEM #	POTTED EVERGREENS	SIZE	PRICE/1
301	White Pine	2 gal	\$20.00
303	Colorado Spruce	1 gal	\$14.00
308	Black Hill Spruce	1 gal	\$14.00
311	Norway Spruce	1 gal	\$14.00
312	Canadian Hemlock	1 gal	\$14.00

ITEM #	SHADE TREES	SIZE	PRICE/1
401	Swamp White Oak	1 gal	\$33.00
402	Shingle Oak	1 gal	\$33.00
403	Bur Oak	1 gal	\$33.00
404	White Oak	1 gal	\$33.00
405	Shellbark Hickory	1 gal	\$34.00

ITEM #	NATIVE SHRUBS	SIZE	PRICE/1
501	American Highbush Cranberry	1 gal (approx 2')	\$28.00
502	Red Osier Dogwood	1 gal (approx 18-24")	\$10.00
503	Shadblow Serviceberry	1 gal (approx 2')	\$31.00
504	Pagoda Dogwood	1 gal (approx 2')	\$33.00
505	Arrowwood	1 gal (approx 2')	\$28.00
506	Nannyberry	1 gal (approx 2')	\$28.00
507	Buttonbush	1 gal (approx 2')	\$27.00

**MCHEMRY COUNTY Soil & Water Conservation District
2009 Fish Sale Price List**

Name		Daytime Telephone	
Address		Evening Telephone	
City	State	Zip	

NOTE: If ordering Triploid Grass Carp you must fill out the information form for the IDNR Permit on the next page. (Example: for Nunda township T44N R8E Section 12)

	Size	Price	Quantity	Subtotal
Channel Catfish	4" – 6"	\$0.80 each		
	6" - 8"	\$1.10 each		
	8" - 10"	\$1.40 each		
Largemouth Bass	2" – 3"	\$1.20 each		
	5" – 8"	\$2.70each		
Hybrid Sunfish	1" – 2" approx. 250/bag	\$90.00bag Only ordered by the bag		
	3" – 5"	\$1.10 each		
	5" - 7"	\$1.80 each		
Fathead Minnows	Order in pounds (100-150 per lb.)	\$15.00/pound		
Bluegill	1" – 2" approx. 250/bag	\$90.00/bag Only ordered by the bag		
Bluegill	3" – 5"	\$1.10 each		
Triploid Grass Carp	8" – 11"	\$15.00each		
TOTAL				\$

Deadline to order: April 15, 2009 for Triploid Grass Carp Deadline to order: April 26, 2009 for all other fish.

Distribution date: Saturday May 2nd at 7AM. Distribution will be held at 2222 Dean Street, Woodstock. Located 500 feet south of the intersection of Rt. 14 and Dean Street

Payment must be included with your order.

Make check payable to: McHenry County SWCD
1648 S Eastwood Drive, Woodstock, IL 60098

USE YOUR VISA OR MASTERCARD TO ORDER

Card Number: _____

Expiration Date ____/____/____ Name on Card (print) _____

Signature: _____

Sterile Triploid Grass Carp Information Required for IDNR Permit

Please submit this information to us when placing an order for grass carp.

Pond Owners Name _____

Mailing Address _____

Phone Number _____

Legal Description of Pond: Pond Name _____

Pond Size in Acres (approx.) _____

County _____

Township/Range/Section T _____ R _____ S _____ e.g. T45N R6E S5

or Parcel Index Number: _____

**MCHENRY COUNTY SOIL & WATER
CONSERVATION DISTRICT**

1648 S. Eastwood Dr.
Woodstock, IL 60098

Phone: 815-338-0099 ext. 3
Fax: 815-338-7731
www.mchenryswcd.org



The McHenry County Soil & Water Conservation District is an equal opportunity provider and employer.

Awards...Continued from page 4.

Through lessons and discussions about environmental ethics, the impacts of climate change, pollution, energy alternatives, deforestation and habitat destruction, sustainable use of resources, sustainable agriculture, and endangered species conservation, students begin to realize the impact of their own actions.

Her objective is to guide students in developing an understanding that although these issues are global, they are also local: in the school, at home and in the community. Small changes can make a difference and programs implemented by her students create a foundation that they not only carry on as individuals, but they also are able to educate others.

Aimee feels honored to be able to provide students with opportunities that get them involved and feel like a part of something that contributes to environmental solutions.

Make a Difference Day



A big thank you to all of the participants in “Make a Difference Day”! This great mix of students and adults worked on the invasive poplars at our Dean Street facility. Student participants included: Camille Claussen, Caroline Golden, Nina Butler, Alex Furio, Courtney Crook, Brittany Heniff, Brian Clow, Alex Koltun, Lauren Murphy, Wendy Mader, Tanya Montgomery, Katie Trayser, Maryann Piel, Maresa Spooner, Brad Waldschmidt, Kelsey Arnold, Carli Salading, Ariel Stach, and Harini Iyer.